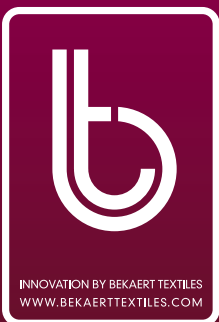
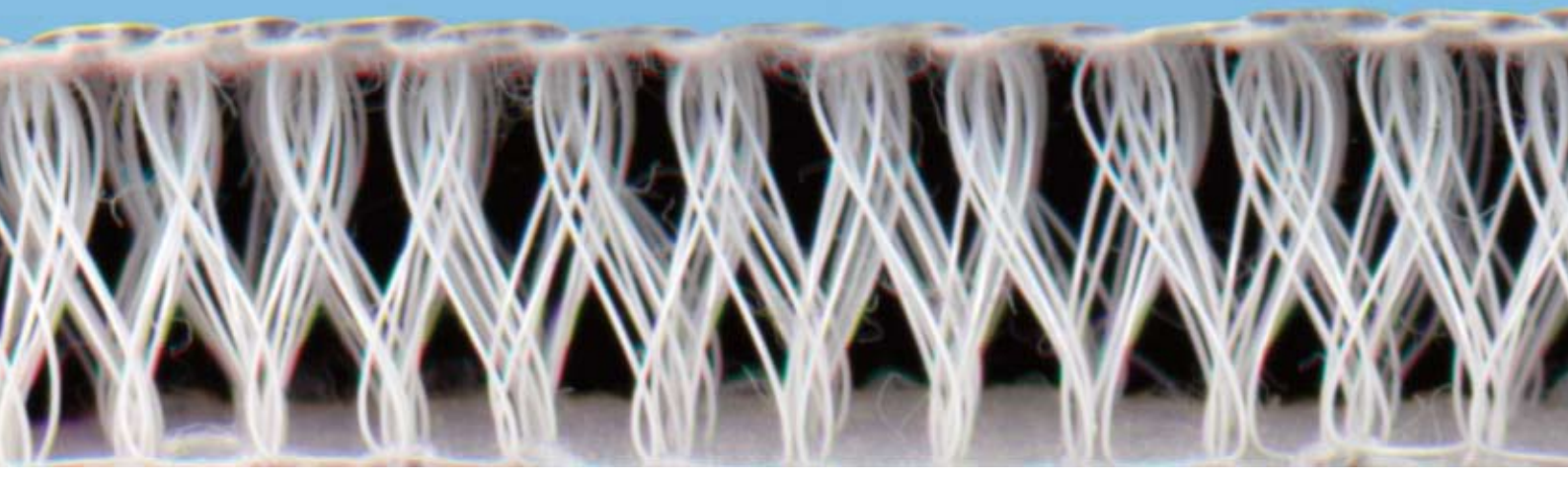


cairfull

air circulation



Mattress ticking with air circulation



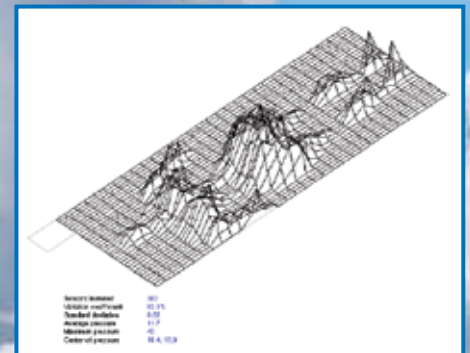
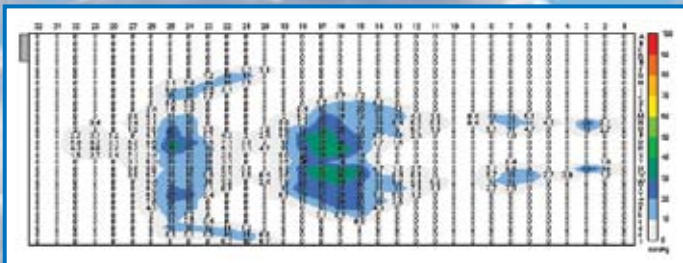
ULTIMATE SLEEPING COMFORT

A recent joint study from the European Sleep Research Institute (ESRI), in cooperation with the University of Leuven, Brussels (Faculty of Science), showed that the comfort of a visco-elastic foam mattress with a Cairfull top panel was rated significantly (in average 14 %) superior to the comfort of the same mattress with a standard knitted cover.

OUTSTANDING PRESSURE RELIEF

The same study shows that Cairfull creates considerable pressure relief for the test person laying down on a mattress in either back or side position. The pressure is measured on a 32 x 32 sensor grid and visualized in the pressure map below.

Health problems can be caused from concentrated pressure in the hip and shoulder zones. Cairfull has been designed to improve the support of the body resulting in optimal pressure distribution.



CAIRFULL - AIR CIRCULATION

- Cairfull is a product range with a unique highly-resilient three-dimensional structure.
- Cairfull creates a functional layer of air space that results in multiple benefits and ultimate sleeping comfort.
- Cairfull acts as a breathing layer, combining pressure relief, thermoregulation and moisture management in one high tech fabric.
- Cairfull is applicable as top panel (especially with memory foam), quilted or unquilted border, bottom panel (for wooden slat systems) or inner layer substitute that is superior to foam.
- Cairfull is available in a broad variety of weights, textures and exclusive jacquard designs.

SUPERB AIR CIRCULATION

The excellent moisture management properties of Cairfull have been supported by TNO, the Dutch Organization for Applied Scientific Research.

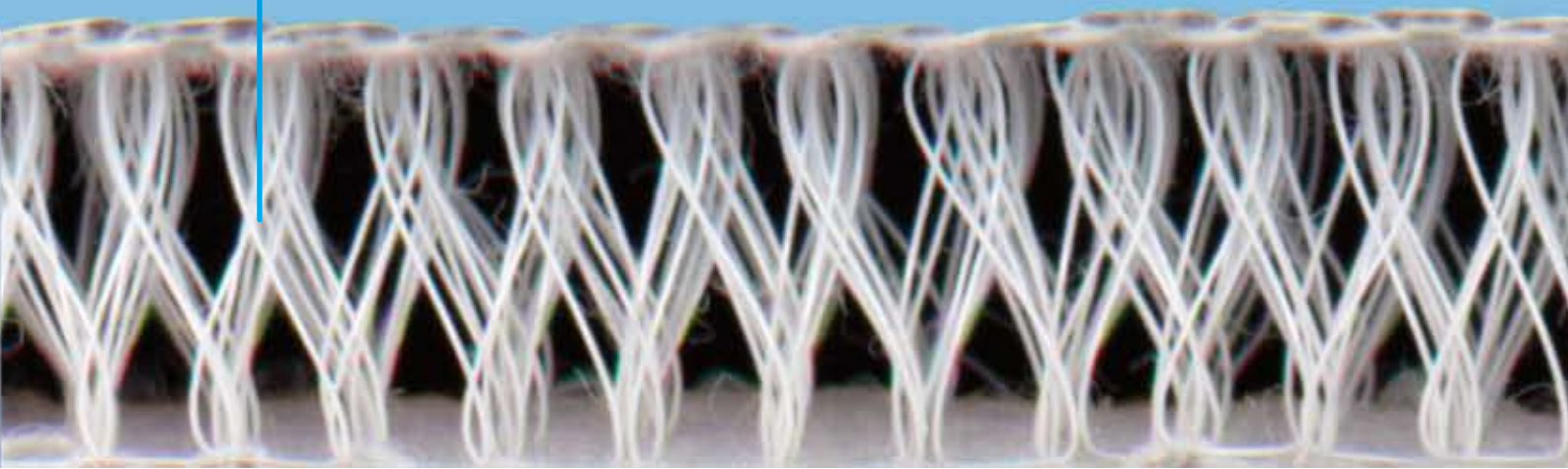
The airspace created by Cairfull is keeping the surface of the mattress dry and is shown to be 2.5 times more effective than a standard knitted mattress cover in preventing humidity from reaching the mattress core (water vapour resistance test method EN 31092/ISO 11092 : 1993).

The air circulation will quickly and fully dry the Cairfull inside layer as shown in the below TNO index.

	moisture discharge by a dispenser at 37 °C and 95 % RH	moisture absorption % of total discharge	free drying	residual moisture
standard knit	8 hours	57%	8 hours	55%
Cairfull	8 hours	36%	8 hours	4%

MATTRESS LIFETIME RESILIENCE

The normal lifetime of a mattress is simulated by 30.000 cycles on the roller tester (test method EN 1957 : 2000). This test was shown to have no impact on the resilience and the stability of the Cairfull cover.



Mattress ticking with air circulation

cairfull
air circulation



Bekaert Textiles Group
W O R L D W I D E

@PIRANACONCEPTS.COM

WWW.BEKAERTTEXTILES.COM